

# How can **RLID** benefit you?



**SEARCH** and report with ease



**ACCESS** current and reliable data



**SAVE** time and money



**RECEIVE** local expert support

The Regional Land Information Database (RLID) is the coordinated resource for the best available land information in Lane County, Oregon.

**“RLID is an essential part of EWEB’s operation for identifying property ownership and easy access to maps allows us to verify existing Public Utility Easements. We depend on the reports to provide accurate and reliable information for EWEB’s Energy Loans and Utility Easement document preparation. RLID is a valuable resource to have on hand.” – Carol Eggleston, EWEB Right-of-Way Agent**

## **SAVE time and money**

- Access information from your home and office.
- Convenient 24/7 access via the internet.
- Find multiple agency data in one location.

## **SEARCH and report with ease**

- Find properties of interest by matching key information, filtering by characteristics, or locating on a map.
- Options to do it yourself or request custom mapping and reporting services.
- Create standard products or output raw data to integrate into your own systems.

## **ACCESS current and reliable data**

- “Real Time” taxes and lien data.
- Nightly, weekly, and monthly updates of addresses, parcels, ownership, sales, schools, zoning, and more.
- Direct from the local government sources and leading commercial providers.

## **RECEIVE local expert support**

- Questions, problems or comments? RLID Support is available to help!
- Individual and group training workshops are offered.
- We want YOU to succeed – tell us how we can make RLID work for you.

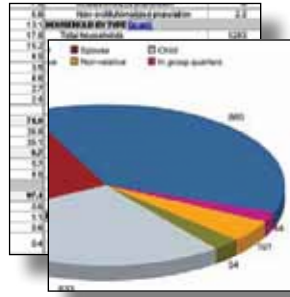
**“RLID saves time for our busy staff and makes it easier for families to get the information they need, when they need it. We used to get hundreds of calls every year from parents wanting to know what school their children would be attending. Now families can find accurate information on their own, at any time of the day or night, because our website directs them to the free RLID Quick Look feature.” - Eliza Drummond, Eugene School District 4J**

# Samples of what you'll find at RLID.org



## Maps

*Taxmaps, plats, floodmaps, aerial imagery, and more*



## Demographic and Business Reports

*Census information, NAICS/SIC codes, sales volume, employment*



## Property Reports

*Site address, land use, zoning, property ownership, land and improvement values, taxes, property sales, and building characteristics*



## Recorded Documents and Images

*Recent property transactions, grantor/grantee name, document number, instrument type and year*



## Interactive Maps

*User-specified buffers, spatial selections around properties, aerial photography, environmental, USGS topos, and tax lot information), custom mailings, labels/list, and more*



## Comparable Sales

*Star rating system, property location map, photos, sale price, price per square foot, and year built*

**“Having access to RLID has significantly improved our ability to provide information to our clients. Online deeds and reports allow us to gather a wide range of data from one place and the mapping lets us discuss site features before we actually visit the site location. This program is a remarkable resource to have available in Lane County.”**

**- Renee Clough, PE, PLS,  
Branch Engineering**

RLID IS A COLLABORATION OF  
FIVE REGIONAL AGENCIES:



SUBSCRIPTION AND INFORMATION



PHONE: 541.682.4283

EMAIL: RLIDSUPPORT@LCOG.ORG

WWW.RLID.ORG



LANE COUNCIL OF GOVERNMENTS

859 WILLAMETTE STREET, SUITE 500

EUGENE, OREGON 97401

541.682.4283

WWW.LCOG.ORG